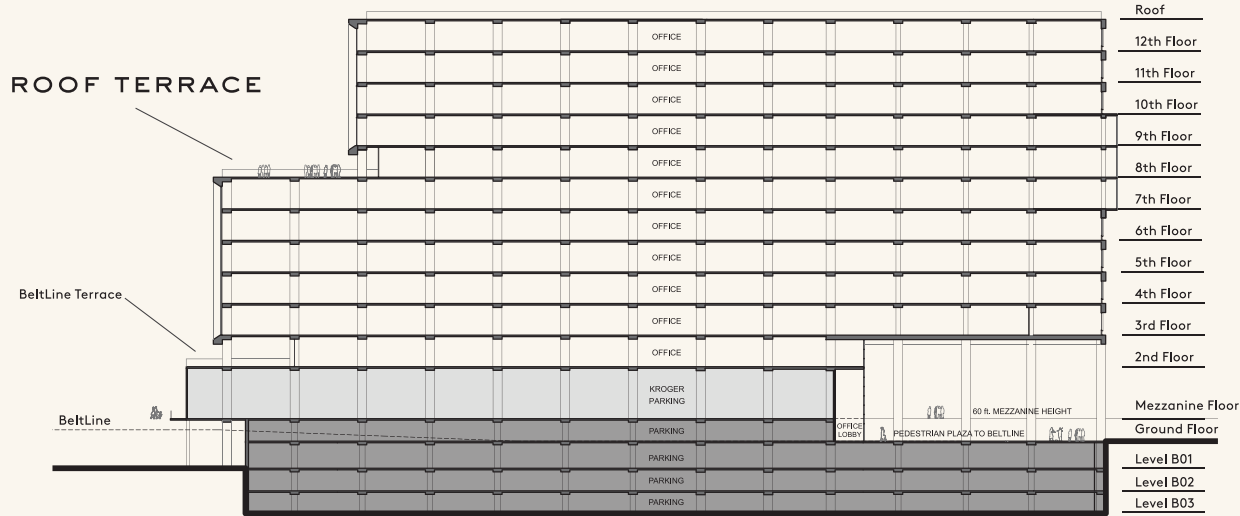




# STACKING PLAN



FLOOR	2	3 - 6	7	8 - 9	10 - 12
RSF	13,459	36,122	35,830	29,409	30,225

360,000 square feet of new loft-office space

Roof terrace and BeltLine terrace

Located on the BeltLine

Views of the BeltLine, Historic Fourth Ward Park and Downtown/Midtown/Buckhead

Anchored by a new urban-prototype Kroger

900+ parking spaces

13-foot ceilings with 10-foot industrial windows

LEED Silver

Shuttle to MARTA

Chef-driven restaurant