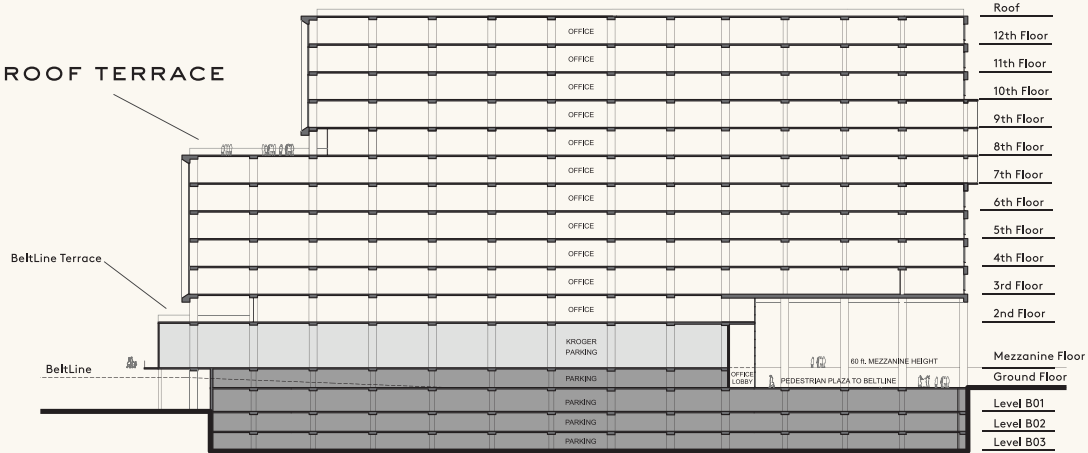


STACKING PLAN



FLOOR	2	3 - 6	7	8 - 9	10 - 12
RSF	12,357	39,421	39,010	31,349	33,001

370,000 total rentable square feet of new loft office space

Roof terrace and BeltLine terrace

Located on the BeltLine

Views of the BeltLine, Historic Fourth Ward Park and Downtown/Midtown/Buckhead

Anchored by a new urban-prototype Kroger

900+ parking spaces

13-foot ceilings with 10-foot industrial windows

LEED Silver

Shuttle to MARTA

Chef-driven restaurant